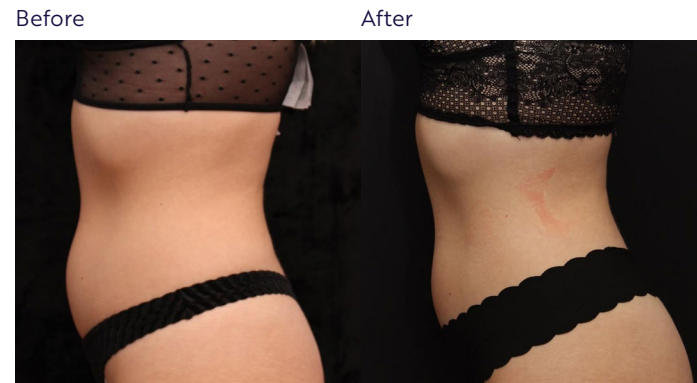


TRUE RESULTS

Tap into this fast-growing market and deliver results with high patient satisfaction^{3,8-10}



1 truSculpt treatment and 4 truFlex treatments
PHOTOS COURTESY OF JEFFREY FROMOWITZ, MD



1 truSculpt treatment and 4 truFlex treatments
PHOTOS COURTESY OF TAHL HUMES, DO



1 truSculpt treatment and 4 truFlex treatments
PHOTOS COURTESY OF MIRA KAGA, MD




1 truSculpt treatment and 4 truFlex treatments
PHOTOS COURTESY OF SUN SCULPT BODY CONTOURING


100% of patients were satisfied with the procedure⁹

92% of patients were satisfied eight weeks post-treatment¹⁰

Patient results may vary.



truSculpt	
Technology	Monopolar Radiofrequency (RF)
Frequency of Operation	1 MHz / 2 MHz
Console Dimensions	14"W x 17.5"L x 41.5"H
Console Weight	86 lbs
Console Electrical	Voltage: 100 VAC-240 VAC 50/60 Hz Power: 2000 VA



truFlex	
Technology	Direct Electrical Muscle Stimulation
Frequency of Operation	4000 Hz
Console Dimensions	14"W x 17.5"L x 40"H
Console Weight	72 lbs
Console Electrical	Voltage: 100-240 VAC @ 50/60 Hz Power: 75 VA

TRUSCULPT/TRUFLEX:
Please review the operator's manual and treatment guidelines for the contraindications, precautions, warnings, side effects and possible adverse events associated with the truSculpt/truFlex treatment. Results and experience may vary.

REFERENCES:
1. truSculpt Clinical Guidelines, Cutera, Inc. 2. truFlex Clinical Guidelines, Cutera, Inc. 3. The Aesthetic Society. Aesthetic Plastic Surgery National Databank Statistics 2020-2021. Available from <https://cdn.theaestheticsociety.org/media/statistics/2021-TheAestheticSocietyStatistics.pdf>. Accessed Nov 4, 2022. 4. Data on File. Cutera Inc. 5. Jettus J. truSculpt ID Creates Customized Treatments. *The Aesthetic Guide*. September/October 2018. 6. Somenek MT, Ronan SJ, Pittman TA. *Lasers Surg Med*. 2021;53(3):337-343. 7. Ronan SJ. A Novel Bio-Electrical Current Stimulation Device For Improvement Of Muscle Tone [white paper, Cutera Inc.]. 7/2019. 8. American Society for Dermatologic Surgery. Total procedures in 2019. Available from <https://www.asds.net/Portals/0/PDF/procedures-survey-results-infographic-2019.pdf?ver=DbHY7gNS3zVWV0T6rghCg%3d%3d>. Accessed Nov 8, 2022. 9. Data on File. truSculpt ID Patient Satisfaction Survey, Cutera Inc. 10. Spring LK, et al. *Dermatol Surg*. 2022;48(3):334-338. 11. Napekoski KM, Ronan SJ, Pocock GM. Inflammatory and adipocyte cell death response following a single 15-minute monopolar radiofrequency treatment [white paper]. 2018. 12. Nye R, Hoffmeister A. The process of muscle hypertrophy utilizing a novel bio-electrical muscle stimulation device [white paper, Cutera Inc.]. 1/2020.

ABOUT CUTERA
Cutera is a leading provider of laser and other energy-based aesthetic systems for practitioners worldwide. Since 1998, Cutera has been developing innovative, easy-to-use products that enable physicians and other qualified practitioners to offer safe and effective aesthetic treatments to their patients.

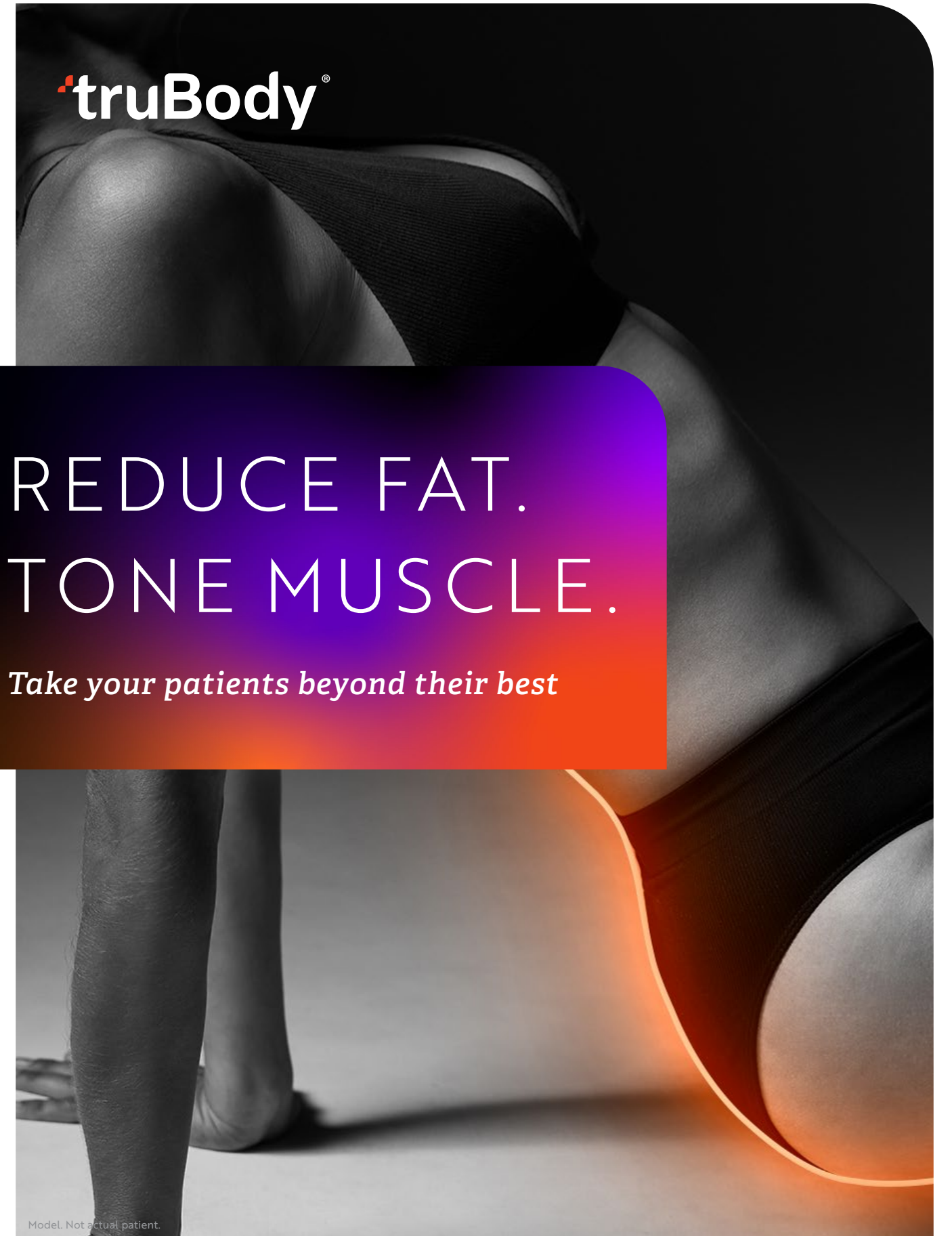
Cutera, Inc. World Headquarters
3240 Bayshore Boulevard, Brisbane, California 94005 USA
888-4-CUTERA or 415-657-5500 | info@cutera.com | cutera.com

©2023 Cutera, Inc. All rights reserved. AP003850 rA (1/23)

CUTERA
FACE + BODY AESTHETIC SOLUTIONS

truBody

truSculpt
truFlex



truBody

REDUCE FAT.
TONE MUSCLE.

Take your patients beyond their best

Model. Not actual patient.

The ultimate aesthetic duo

truBody combines two award-winning technologies to deliver a customized, convenient and complete solution that addresses today's in-demand treatments – fat reduction with truSculpt® and muscle toning with truFlex™.¹⁻³



CUSTOMIZED

Adjust placement, duration, pattern and intensity to take patients **beyond their goals**^{1,2}

Target both large and small areas^{1,2}

Selectively target muscles^{1,2}

Approved to treat all body types, skin types and fitness levels^{1,2}

CONVENIENT

One of the fastest fat reduction treatments; complete body sculpting treatment in as little as **30 minutes**^{1,2,4}

Delegable, hands-free treatment*

No downtime^{1,2,5}

Treat up to **8 areas** simultaneously^{1,2}

*Depending on state regulations

COMPLETE

Treat fat in a single session^{1,2}

Average **24% fat reduction** per treatment area⁶

Up to **30% increase** in muscle mass⁷

Results after one treatment series^{6,7}

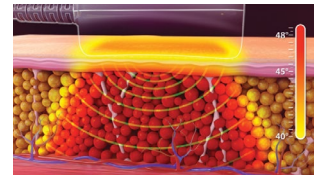
truSculpt Reduce fat

truSculpt is a non-invasive treatment that delivers monopolar radiofrequency (RF) technology to **target unwanted fat** on the abdomen and flanks.¹



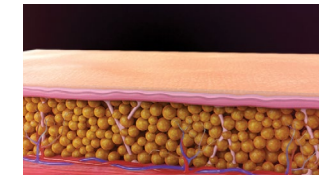
2 MHz monopolar RF

Proprietary, low-frequency uniform delivery penetrates deep to treat the subcutaneous fat layer.¹



Real-time temperature control

RF energy is continuously monitored and adjusted, keeping the skin comfortably heated to 43-45°C, while the subcutaneous fat continues to heat, reaching therapeutic temperatures of ~46- 48°C.¹



After a single 15-minute treatment

Damaged fat cells are slowly broken down and eliminated from the treated area through the lymphatic system over a 12-week period.¹¹

OPTIMIZE THEIR RESULTS. IMPACT YOUR ROI.



POTENTIAL FOR HIGH PATIENT THROUGHPUT



HIGH ROI



LOW-COST CONSUMABLES



FAST TREATMENT SESSIONS¹²



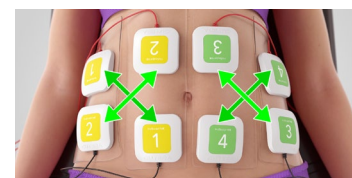
INCLUSIVE TECH = MORE PATIENTS

Reveal their true potential with the only body sculpting system that empowers this level of customization.

Visit yourtrubody.com for more information

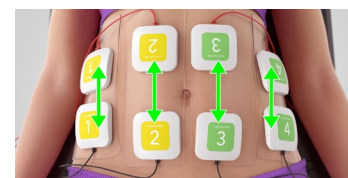
truFlex Tone muscle

truFlex is a customizable muscle stimulation device featuring multidirectional stimulation (MDS) technology to **strengthen, tone and define** muscles on the abdomen, obliques, glutes and thighs.² This device mimics five different workouts, delivering muscle contractions equivalent to **54,000 crunches**.^{4,12}



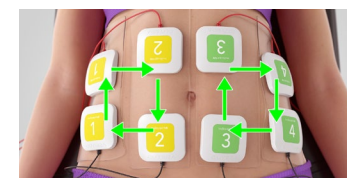
Mode 1: Prep

Creates a twisting motion to warm up, stretch the muscles and slowly build a tolerance to muscle contractions.²



Mode 2: Tone

Contracts the muscles, holds them to the point of exhaustion, and then allows the muscles to relax, increasing strength and enhancing endurance.²



Mode 3: Sculpt

Increases muscle mass by using fast, deep, sequential contractions of the muscles.²



5x growth in body sculpting demand over the last 8 years⁸

And the popularity of procedures continues its rapid rise³

58% increase in nonsurgical fat reduction treatments³

42% increase in muscle tightening/toning treatments³

